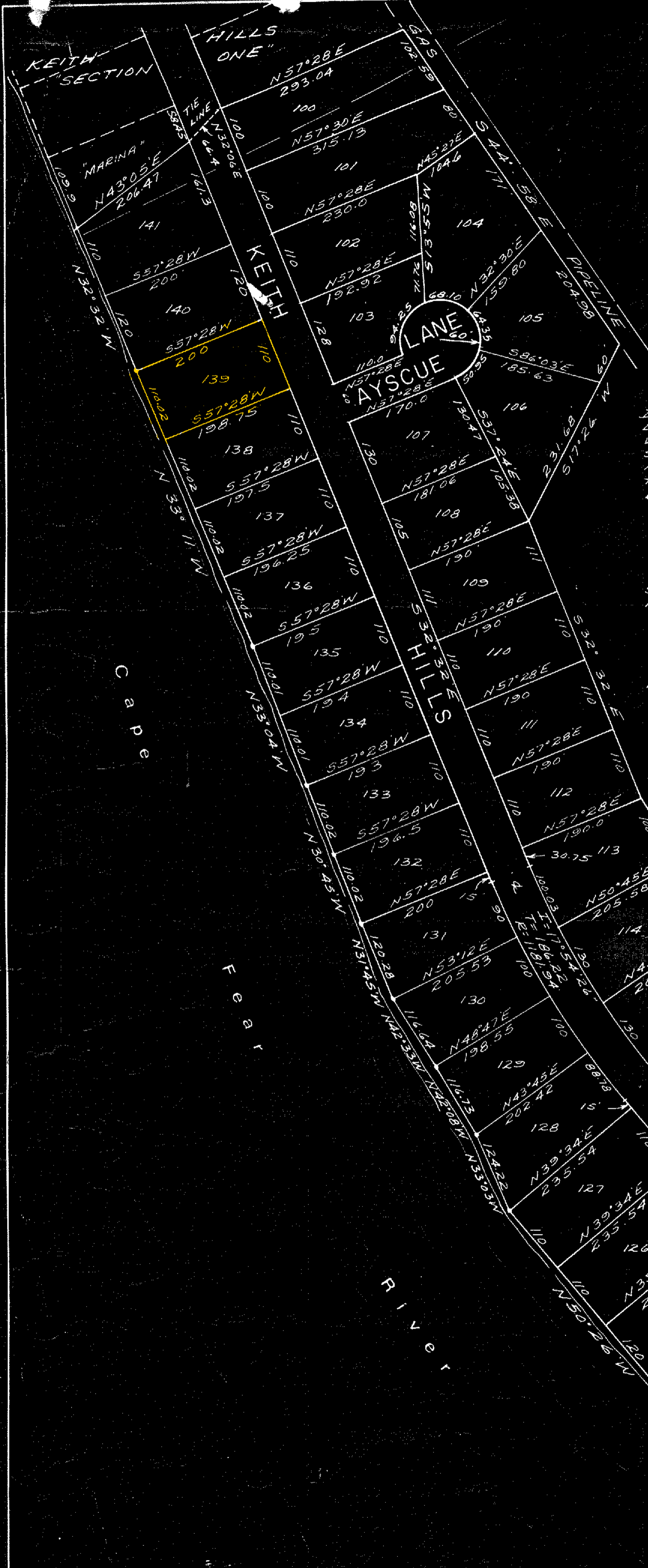


KEITH HILLS

SECTION TWO
PAGE 1 OF 3

PROPERTY OF
Campbell College, Inc.

NEILL'S CREEK TOWNSHIP
HARNETT COUNTY, N. C.
November 26, 1973 — Scale — 1" = 100'
C. H. Blue and Associates
Southern Pines, N. C.



I, C. H. BLUE, REGISTERED LAND SURVEYOR,
DO HEREBY CERTIFY THAT THIS MAP
WAS MADE BY ME FROM MY ACTUAL
SURVEY IN ACCORDANCE WITH G.S. 47-30
AS AMENDED AND THAT IT IS CORRECT
TO THE BEST OF MY KNOWLEDGE AND
BELIEF.

C. H. Blue
C. H. BLUE, R. L. S. No. 642

SUBSCRIBED AND SWORN TO BEFORE
ME THIS 3rd DAY OF DECEMBER, 1973.

Stephen R. Safford
NOTARY PUBLIC

MY COMMISSION EXPIRES: 1-28-76

ERROR OF CLASURE EXCEEDS: $\frac{1}{10,000}$

REFERENCES: DEED BOOK PAGE
DEED BOOK PAGE
HARNETT COUNTY REG.

Filed for registration at 2:45 P.M.
Jan 22 1974 and recorded in
the Office of the Register of Deeds for Harnett
County, N. C. on Jan 19 1974
Book 49
Page 49
Thomas J. Miller
Recorder and Verifier

CONTROL CORNER
CONCRETE MONUMENT



CONTROL COR.
CONC. MON.

49